

FULL DAY PRIVATE TOUR

## NATIONAL PARK PRIVATE TOUR

PARADISE CAVE - PHONG NHA CAVE - UAZ JEEP OPTIONAL



*Our Phong Nha National Park Tour for private groups is our classic experience of the National Park taking in the favorite and most-visited destinations with our professional English and Vietnamese speaking guide. Our tour is highly informative with plenty of time to enjoy the park.*

**O**ur Phong Nha National Park tour starts at either the semi-wild enclosure, where guests will learn about the critically endangered Ha Tinh Langurs, and enjoy an easy walk around the enclosure. Or if they prefer, the tour will can visit the Phong Nha Botanic Garden instead, where guests will take a short 20minute walk through the gardens to the waterfall.

After a short drive along Victory Road 20 into the national park, guests will visit Hang 8 Co (8 Ladies Cave), the second highlight for the day. Here guests will learn a little more

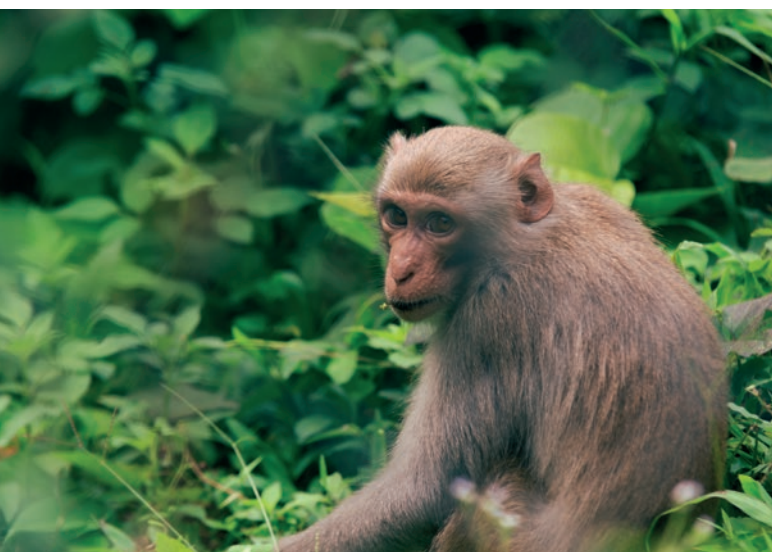
about the Vietnam/American War and its impact on the area, and visit a historically significant temple that honors the Vietnamese soldiers who lost their lives during the war.

The tour will continue through the park to the highlight, Paradise Cave, or as locals call it Hang Thiên Đường, a 31 km cave discovered in 2005. Your guide will give you a fresh perspective of the cave as you wander its network of walk-ways and impressive cave formations, highlighted by moody lighting.

**TOUR CODE: P\_NP1**

All National Park tours are definitely not the same, as our guide will ensure your experience is beyond exceptional visiting this popular destination.

Chay Lap village is next on the agenda, where guests will enjoy a delicious BBQ lunch along the riverside, and they will have a short amount of time to take a swim if the weather permits. The guests will then transfer back to Phong Nha, where they will take a



traditional boat down the river to Phong Nha Cave.

Phong Nha Cave is one of the most beautiful river caves in the world, and guests will have a chance to experience its depths whilst on their dragon boat quietly paddled by local people. The section visited is lit up for guests to appreciate the stunning cave formations. At the completion of the boat tour guests will be transported back to Phong Nha by the traditional boat, and onto their accommodation by private vehicle.

## DETAILED ITINERARY

### 8:00 - 8:30

Tour guide will pick you up from hotels in Phong Nha and drive to Botanic Garden or Semi Wild Enclosure

### 8:30 - 9:00

Semi wild enclosure to see Ha Tinh langur (if you are lucky you can see many of them on the mountain). Or Botanic Gardens

### 9:00 - 9:15

Visit Tra Ang Bridge overlooking the National Park.

### 9:15 - 9:45

Visit 8 Ladies Cave and the memorial temple

### 9:45 - 10:15

Drive through the park to Paradise Cave

### 10:15 - 12:15

Visit Paradise Cave, a natural wonder by tectonic processes hundreds of millions of years in the Phong Nha - Ke Bang Karst system. Paradise Cave is first discovered in 2005 by the British Cave Research Association. It is said that the cave's beauty is reminiscent of an imperial palace and very well resented with easy access, great walkways, and excellent feature lighting which makes it extra special.

### 12:15 - 12:30

Drive to Chay Lap

### 12:30 - 13:30

Lunch at Chay Lap Riverside

### 13:30 - 14:00

Drive back to Phong Nha Boat Station.

### 14:00 - 17:00

Get on boat to visit Phong Nha cave. You will visit two different part of Phong Nha Cave, one is a wet cave, visiting inside the cave by boat and the is a dry cave. The ride inside the underground river was a beautiful experience, Champa inscriptions carved on steles and altars in the cave demonstrate that people had inhabited the cave for hundreds of years.

**TOUR CODE: P\_NP1**

**17:00 - 17:30**

Boat drive finished at Phong Nha boat port. Drive you back and drop you off at the hotel. Tour finished.

---

## INCLUSIONS

- English speaking tour guide
- Pick up from/to Phong Nha
- Transportation around the park
- Paradise Cave entrance ticket (VND 250,000)
- Paradise Cave Golf Buggy
- Semi-wild enclosure or Botanic Garden entrance tickets
- Entrance to Chay Lap Riverside
- Phong Nha Cave Boat Ticket and Cave Entrance
- Lunch, water

Tour excludes personal expenses and additional drinks or beers.

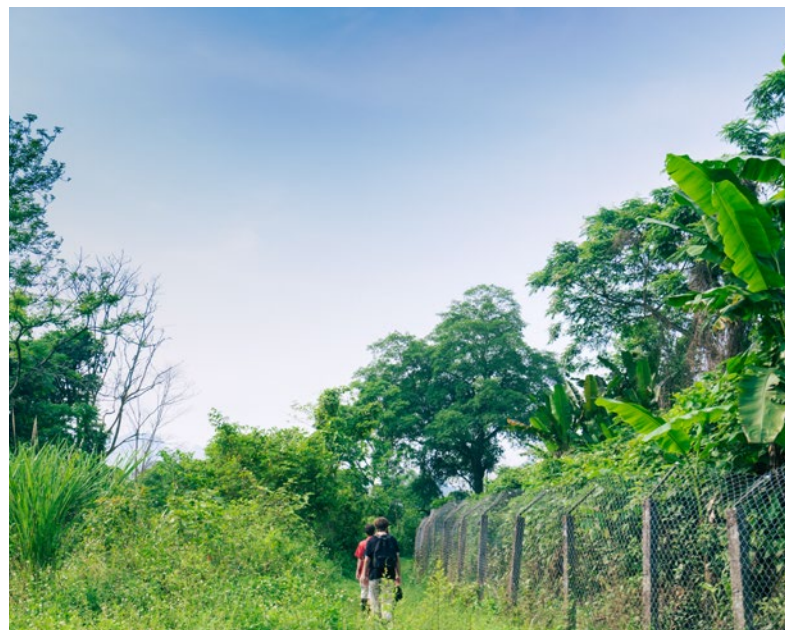
## WHAT TO BRING

- Comfortable clothes and shoes
- Sunscreen
- Hat, sunglasses
- Bug spray
- Camera or phone
- Rain poncho

## CONTACT

Email: [contact@didithoi.com](mailto:contact@didithoi.com)

Hotline: 091 990 0423



**TOUR CODE: P\_NP1**